

THE ERGOHUMAN COLLECTION

eurotech
A RAYNOR GROUP COMPANY



ERGOHUMAN
XTREME

ERGOHUMAN
GEN2



ERGOHUMAN GEN2



The GEN2 is engineered with your total comfort in mind. Aesthetics, form and function are merged seamlessly in a single design, and allows the chairs to be minutely adjusted to achieve unrivaled ergonomic fine tuning.

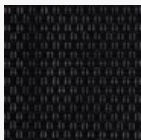




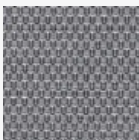
Features

- ✓ SYNCHRO-TILT WITH SEAT SLIDER
 - ✓ FORWARD TILT
 - ✓ TILT-LOCK
 - ✓ TILT-TENSION
 - ✓ SINGLE LEVER CONTROL FOR HEIGHT, SEAT DEPTH AND TILT LOCK
 - ✓ LUMBAR TENSION CONTROL
 - ✓ HEIGHT ADJUSTABLE RATCHET BACK
 - ✓ 6-WAY DYNAMIC LUMBAR PANEL
- FPC MATERIAL IS LIGHTER, MORE DURABLE WITH HIGHER QUALITY-SMOOTHER SURFACE.

BLK



GRY



BLU



Back: 20.67" x 27.17-29.92" (W x H)

Cube: 10.8

Seat: 20.67" x 19.69" (W x D)

Weight: 66 lbs

Seat Height: 17.83" (at lowest point)

21.38" (at highest point)

Overall Dimensions:

26.18" x 26.57" x 44.69-51.18" (W x D x H)

CERTIFICATIONS

Meets/Exceeds ANSI/BIFMA

GREENGUARD Gold (97% Recyclable)



FRAME

FPC (non-petroleum material)
Stronger, smoother surface
than nylon.

GLASS FIBER MECHANISM

for smoother adjustment
and precision

Matrex T168 mesh with
12 zone mesh support

Material

4D

(pivoting, depth, width and height)

large soft padded arms

ARMS

AVAILABLE MODELS:

ME7ERG-GEN2

ME8ERGLO-GEN2



eurotech

A RAYNOR GROUP COMPANY



ERGOHUMAN XTREME

A new generation of ergonomic seating. Features a tall curved mesh back and lumbar support relieves the back pain that caused by long hours of sitting. Adjustable, yet effortlessly simple. All of its controls have been integrated into a single mechanism. The Xtreme adapts, overcomes and excels.

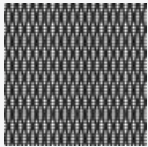




Features

- ✓ SYNCHRO-TILT WITH SEAT SLIDER
- ✓ TILT-LOCK
- ✓ TILT-TENSION
- ✓ LUMBAR TENSION CONTROL
- ✓ ADJUSTABLE BACK HEIGHT
- ✓ 6-WAY DYNAMIC LUMBAR PANEL
- ✓ SINGLE LEVER CONTROL FOR TILT LOCK, SEAT HEIGHT AND SEAT DEPTH ADJUSTMENTS

BLK



fabrix
express

Back: 20.3" x 27.7-23.2" (W x H)

Cube: 9.3

Seat: 19.7" x 15.5-17" (W x D)

Weight: 69 lbs

Seat Height: 20" (at lowest point)
23.6" (at highest point)

Overall Dimensions:

26" x 26" x 40.8-46" (W x D x H)

AVAILABLE MODELS:

ME2ERG-XTRM

ME3ERGLO-XTRM



CERTIFICATIONS

Meets-Exceeds ANSI/BIFMA

GREENGUARD



eurotech
A RAYNOR GROUP COMPANY

